



MONTHLY MEMBERSHIP PROGRESS REPORT

District 2 E1

Results as of: 3/31/2015

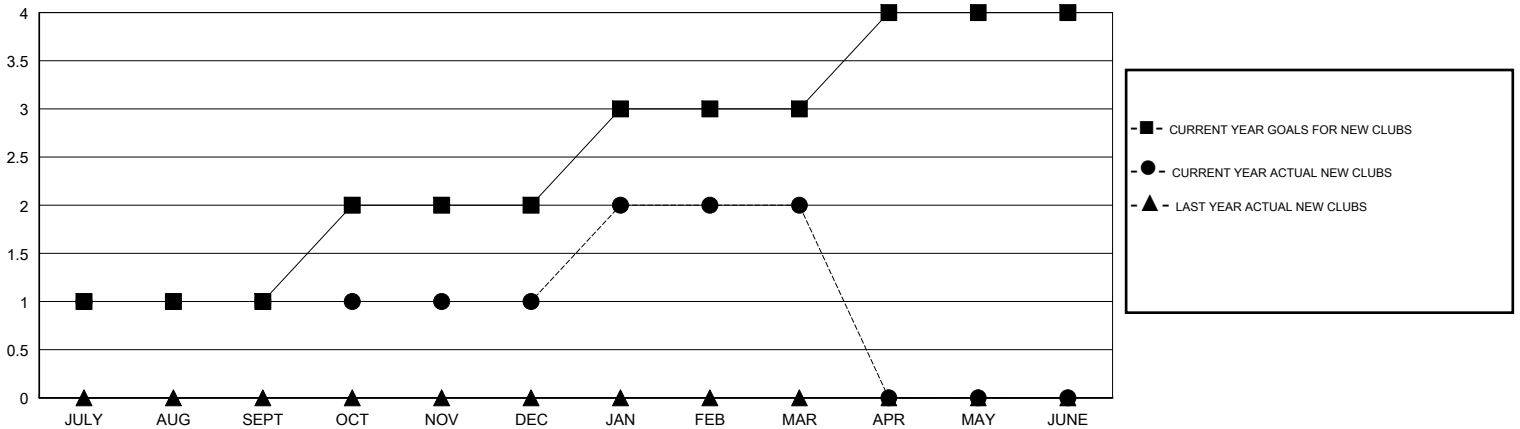
GMT: HAL GRIFFIN

LOCATION TEXAS

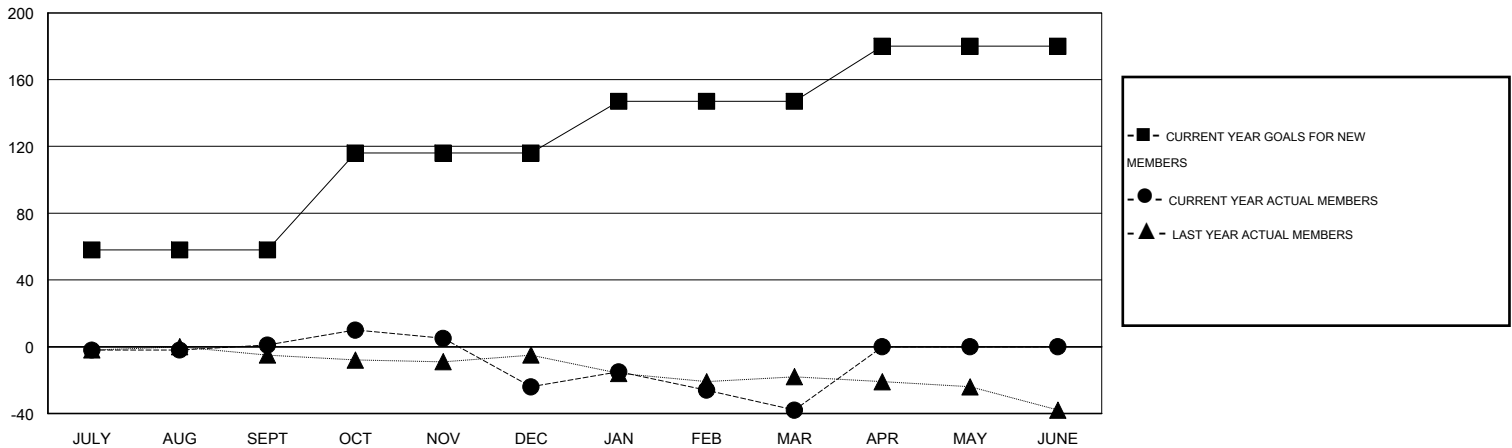
GMT CA 1

Clubs					Members				
RESULTS FOR 2014-2015					RESULTS FOR 2014-2015				
QUARTER	NEW CLUB GOAL	NEW CLUBS	DROPPED CLUBS	NET GAIN/LOSS	QUARTER	NEW MEMBER GOAL	CHARTER AND NEW MEMBERS ADDED	DROPPED MEMBERS	NET GAIN/LOSS
JULY/AUG/SEPT	1	1	2	-1	JULY/AUG/SEPT	58	46	45	1
OCT/NOV/DEC	1	0	1	-1	OCT/NOV/DEC	58	43	68	-25
JAN/FEB/MAR	1	1	0	1	JAN/FEB/MAR	31	59	73	-14
APR/MAY/JUNE	1	0	0	0	APR/MAY/JUNE	33	0	0	0

GOALS AND ACTUAL NEW CLUBS CUMULATIVE



GOALS AND ACTUAL MEMBERS CUMULATIVE



DROPPED CLUBS: 3	31 CLUBS OF 57 ADDED 1 OR MORE NEW MEMBERS	<u>GENDER DISTRIBUTION</u>	
<u>DROPPED MEMBERS</u>		MALE	961 (75.20%)
DECEASED	19	FEMALE	317 (24.80%)
CLUB CANCELLED	41	<u>FAMILY UNIT MEMBERS</u> 112	
OTHER	126	<u>HEAD OF HOUSEHOLD</u> 55	
TOTAL	186	<u>NON-HEAD OF HOUSEHOLD</u> 57	

[CLICK HERE FOR HEALTH ASSESSMENT DATA](#)